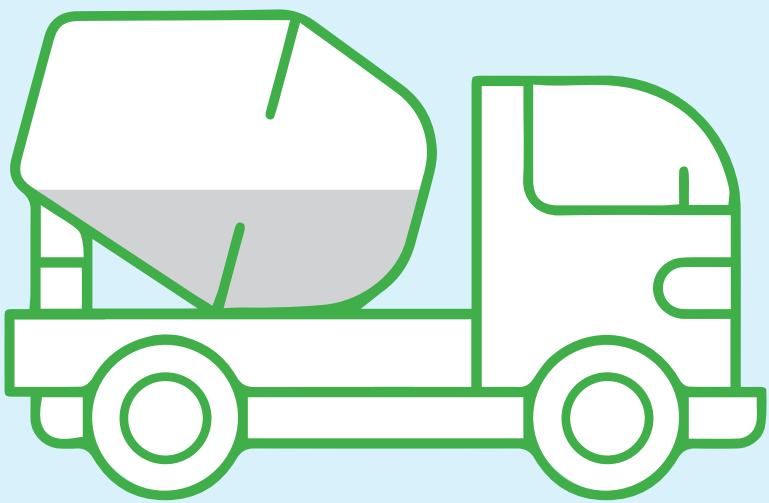


Rozelle Interchange Project Sustainability Initiative

We are working towards **sustainable** solutions. These new technologies provide the following benefits:

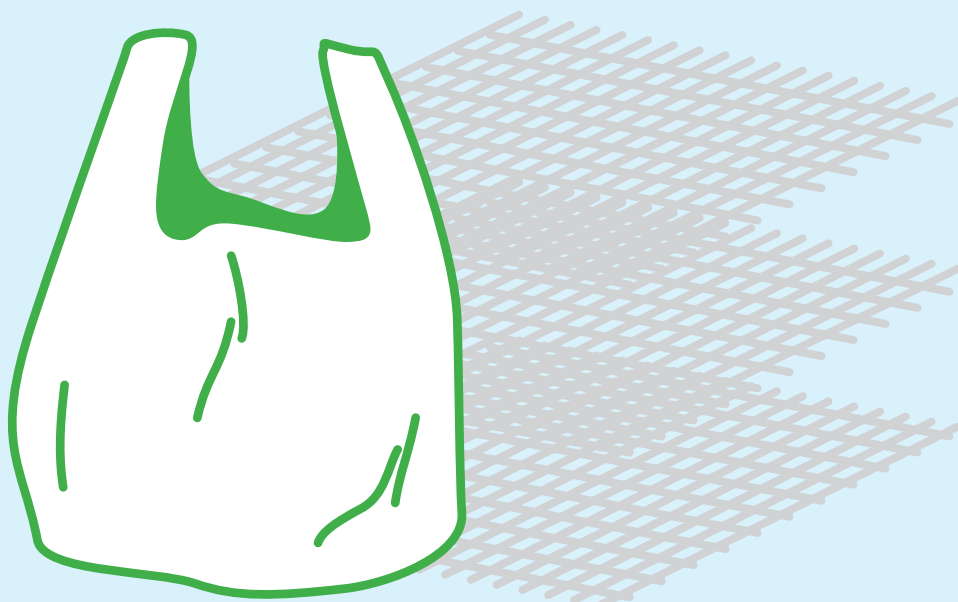
100m³ of low carbon concrete used saving 17.7t of CO₂, providing a 49% reduction compared to conventional concrete.



53,097 glass bottles diverted from landfill as sand replacement.



480kg industrial plastic waste diverted from landfill used as reinforcement.



176,991 glass bottles diverted from landfill as a key ingredient in the asphalt road.



Australian Government

BUILDING OUR FUTURE



NSW
GOVERNMENT

Rozelle Interchange
WestConnex

JOHN
HOLLAND

CPB
CONTRACTORS