



## Borger Cranes

Borger Cranes are a familiar sight to most of you around Sydney and on our project in particular. Borger provide machinery, operators and riggers to some of Australia’s largest construction projects including the Rozelle Interchange.

Starting from humble beginnings Borger cranes are now a fixture on construction sites across New South Wales. This Indigenous, family-owned business has been in operation for more than 20 years and now employs around 200 people.

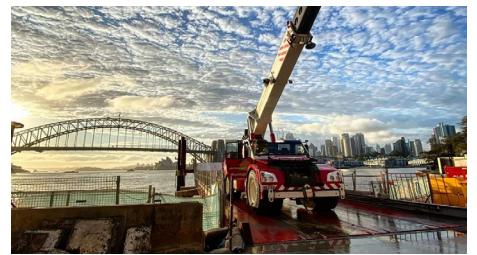
As many of you have experienced, this business is reliable and efficient, and have gone above and beyond to help us when needed. They work seamlessly with our teams and employ the latest in technology and training to ensure safety standards on site are upheld.

Borger Cranes will be a trusted supplier to the Rozelle Interchange Project from start to finish and we welcome and thank them for all their efforts to date. Borger Cranes: Lifting with confidence.

General manager at Borger Cranes, Shawn Borger, says he’s proud of the company’s commitment to building a better future.

“Borger Cranes has been working together with the WestConnex Rozelle Interchange for the past 12 months and we are very grateful of the opportunity,” Shawn said.

“We are committed to the Indigenous community and when we onboard staff, both in the field and in the office, we always look into employing Indigenous people first.”



## Contact

**Luke Gallagher**  
Business Development  
[luke@borgercranes.com](mailto:luke@borgercranes.com)  
0407 635 574

## RIC Site Contact

**Tom Gabris**  
[Tom.Gabris@rozelleinterchange.com.au](mailto:Tom.Gabris@rozelleinterchange.com.au)  
0407 456 396

