

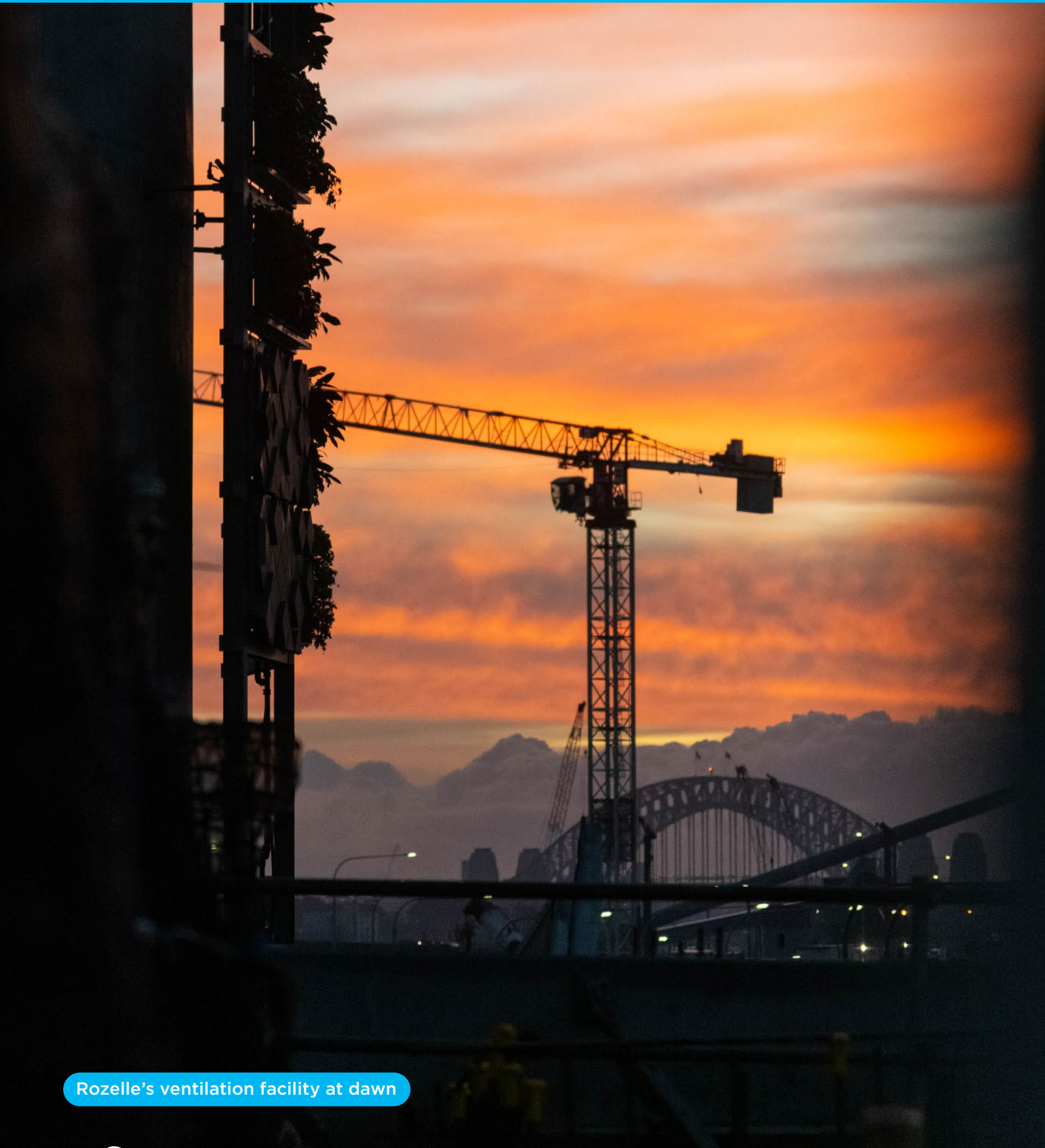
# The Rozelle Interchange Project Factsheet

Q3 2022

Rozelle Interchange  
WestConnex

JOHN  
HOLLAND

CPB  
CONTRACTORS



Rozelle's ventilation facility at dawn

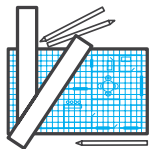
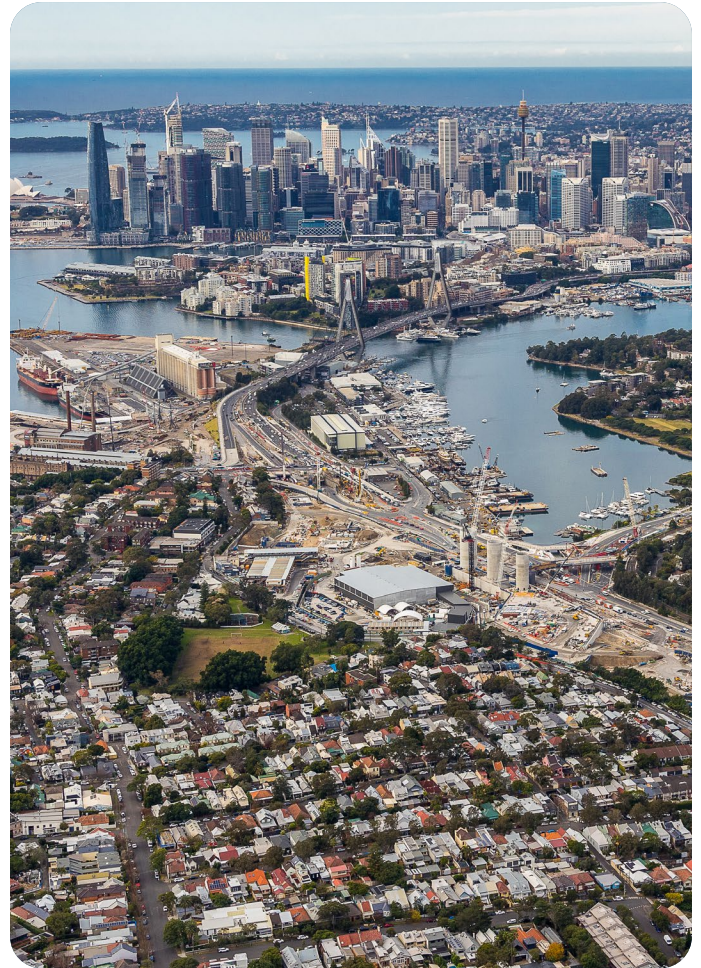
# The Big Picture

The Rozelle Interchange delivers a world class motorway in addition to new and improved connectivity for pedestrians and cyclists through the Inner West.

The project will enhance the Victoria Road corridor at Iron Cove and make a significant contribution to the liveability and greening of this part of The Bays Precinct.

It provides connectivity in the parkland between existing and proposed active transport routes for local communities, where possible.

The Project was recently awarded the first stage of tunnelling for the Western Harbour Tunnel. It will see tunnelling continue from City West Link to Birchgrove where it will connect with Stage 2 underground.

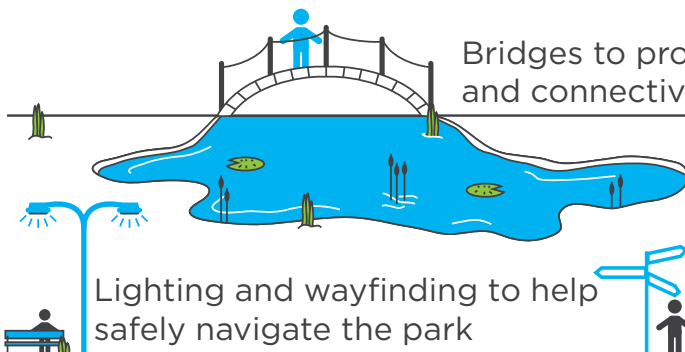
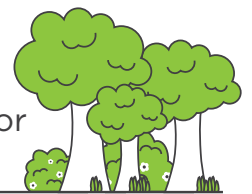


**25,000**  
design drawings

**29km** of mainline, ventilation and access tunnels, including Western Harbour Tunnel Southern Tunnel Works



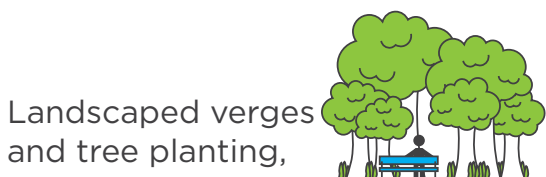
up to **10 hectares** of parkland delivered for the Rozelle community



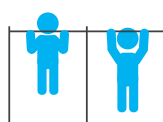
Bridges to provide active transport networks and connectivity across the Inner-West

Wetland areas, a boardwalk and bush trails

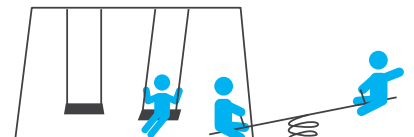
Lighting and wayfinding to help safely navigate the park



Landscaped verges and tree planting,



Fitness stations a fitness trail and play equipment

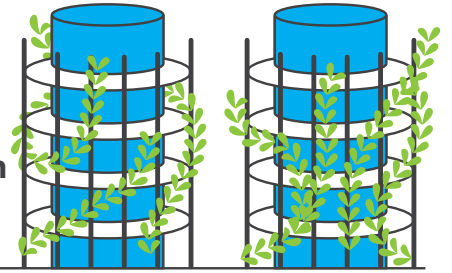




# Built Structures

**4** cut and cover structures forming the tunnel portals

**2** ventilation outlet buildings

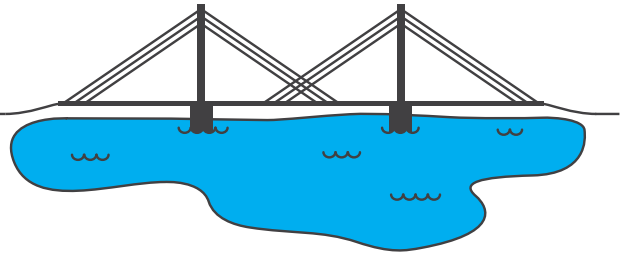


**1** motorway operations complex

**22km** of driven tunnels



**12** total bridges over land and water



**35** major traffic switches over the course of the project while maintaining one of Sydney's busiest thoroughfares



Over **1.5 million** metres of electrical cabling

**8,500** luminaires

**11** substations



**77,000** metres of cable ladders

## Our Values



The project values are what shapes the culture and supports the vision of the Rozelle Interchange Project. We have build the project team to deliver a complicated project and it is not only what we deliver, but also how we deliver it that is important.

**Care:** We will care for the health and safety of our people, our community and for the environment.

**Innovate:** We will communicate and collaborate to create future-focused solutions.

**Deliver:** We will do what we say we will do and expect the same of each other.



Find out more about what we are currently working on by scanning the QR code



# Creating Jobs

Find out about our key initiatives on the Project by scanning the QR code



The Project will create **over 15,000 jobs**

by the time the motorway is opened to the public



With **over 12 million** work hours over a four year period

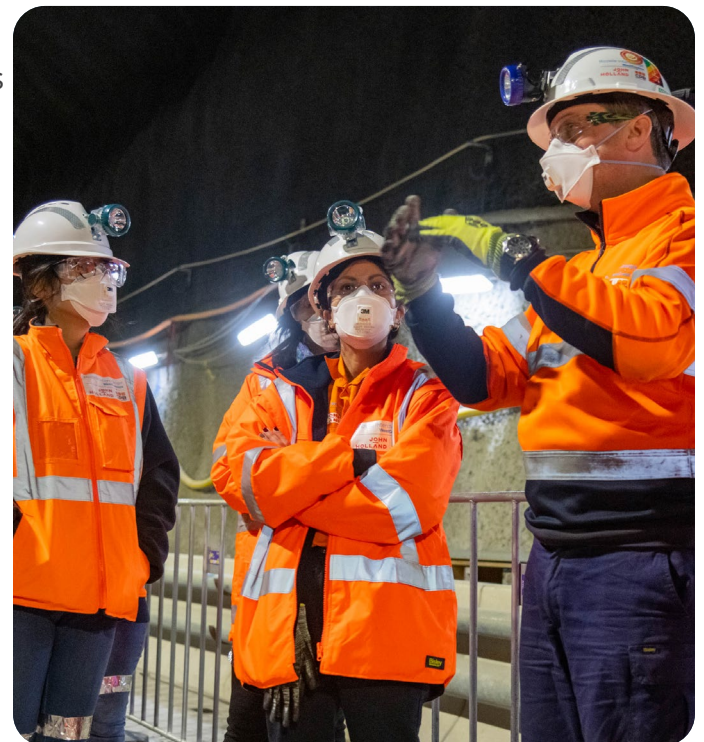
over 12 million work hours over a four year period

## Our Training Academy at Homebush has created a skills legacy:

with over **50,000 people** inducted at the facility across 3 projects

over **100 trainees and 150 apprentices** inducted to the project to date

over **145,000 hours** of accredited training delivered



**25** Indigenous businesses engaged by the project

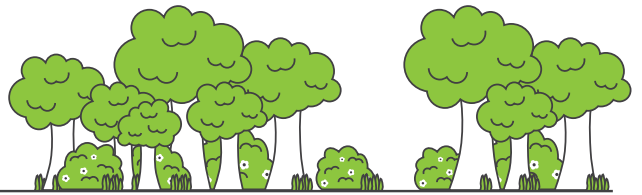
over **1,400 people** directly employed to the project

over **10,000 people** indirectly employed by the project

over **500 jobs secured** for people who were previously long term unemployed (>6 months)

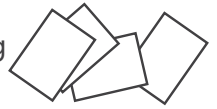


# Sustainability



Saved over

**1.5 million** sheets of paper per year by transitioning to digital construction platform



**4,560** kilograms of plastic fibre used in lieu of steel mesh



**100%** battery powered shotcrete rig



**Australian-first** usage of an electric shotcrete rig, enhancing worker safety through reduction of diesel particulate matter exposure.



**308,000m<sup>2</sup>** of road pavement

more than **2,600m<sup>3</sup>** of bespoke low carbon concrete poured to date

2600m<sup>3</sup> of bespoke low carbon concrete used. This concrete contains a high percentage of waste materials including recycled plastic fibres and recycled glass sand within temporary structural and non-structural works and permanent shared user paths.

An **Australian-first** for the combined used of recycled materials in a no cement type of concrete being used in permanent non-structural Project areas.

**Australian-first** on-site trial of geopolymers concrete using recycled glass sand in collaboration with UNSW, TfNSW and Boral.



**7.8 million** tonnes of spoil removed

using our bespoke Smart-Spoil Tracking System reducing erroneous disposal of material while increasing tracking and reporting transparency.



over

**\$78 million**

spent to date of the \$34 million budget directed towards Aboriginal Participation in Construction

**140** tonnes of glass sand



more than

**770,000** bottles diverted from landfill and used in project pavements

**Leading score of 89**

**ISC design rating** - the highest design score on a WestConnex Project to date

Glove recycling program instituted on the project which diverts thousands of gloves used as protective personal equipment from landfill.



Rozelle Interchange Tunnels overview

# Rozelle Interchange<sup>^</sup>

Opening 2023

## Western Harbour Tunnel & Beaches Link\*

# M4-M5 Link

Eight lanes  
Opening 2023

Find out more about the tunnels on the project by scanning the QR code



Find out about the Rozelle Rail Yards Parklands by scanning the QR code

