

# The Rozelle Interchange Project Factsheet

Q3 2021

Rozelle Interchange  
WestConnex

JOHN  
HOLLAND

CPB  
CONTRACTORS



Artist Impression of Rozelle Parklands upon project completion

1800 660 248

| [info@rozelleinterchange.com.au](mailto:info@rozelleinterchange.com.au)

| [westconnex.com.au](http://westconnex.com.au)

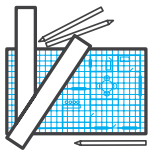
# The Big Picture

The Rozelle Parklands delivers a world class motorway in addition to new and improved connectivity for pedestrians and cyclists through the Inner West.

The project will enhance the Victoria Road corridor at Iron Cove and make a significant contribution to the liveability and greening of this part of The Bays Precinct.

It provides connectivity in the parkland between existing and proposed active transport routes for local communities, where possible.

The Project includes the provision of a future connection to the proposed Western Harbour Tunnel - Sydney's second harbour tunnel.

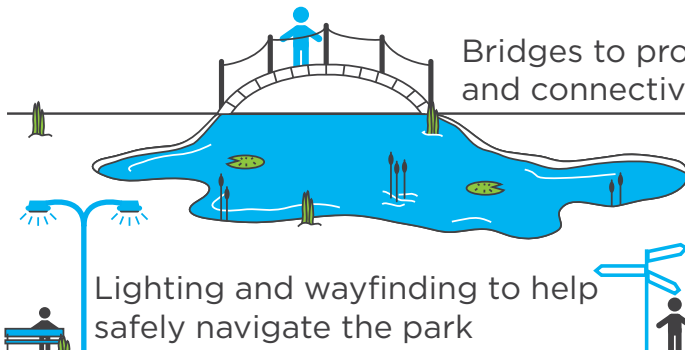
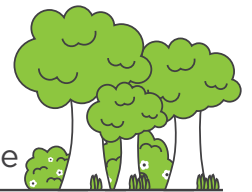


**25,000**  
design drawings

**24km** of tunnels including mainline, ventilation and access tunnels



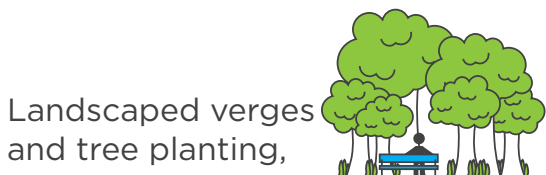
Up to **10 hectares** of parkland delivered in Rozelle



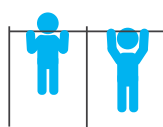
Bridges to provide active transport networks and connectivity across the Inner-West

Wetland areas, a boardwalk and bush trails

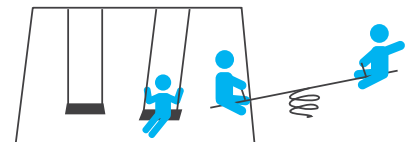
Lighting and wayfinding to help safely navigate the park



Landscaped verges and tree planting,



Fitness stations a fitness trail and play equipment



# Built Structures



## Tunnelling and Back End Works

4 million tonnes of excavated material to be excavated and recycled of in 2021.

120,000 square metres of pavement to be built

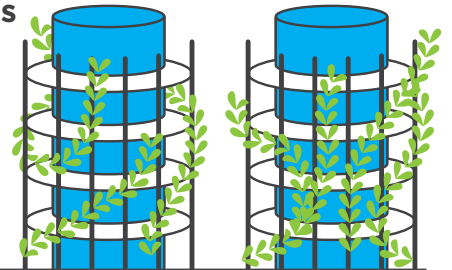
Over 16km of concrete barriers to be cast in situ

23 roadheaders excavating beneath Lilyfield, Leichhardt, Annandale and Rozelle.

The highest sections of tunnel are within the underground ventilation facilities, with tunnel crowns over 20m tall.

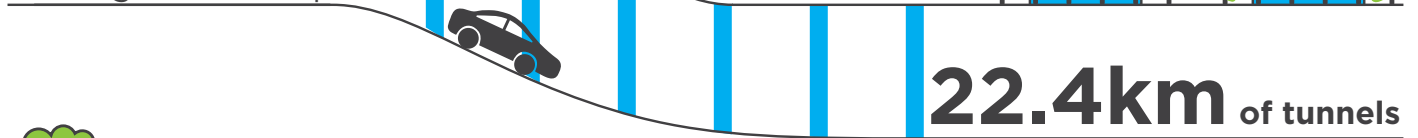
There are 10 roadway caverns across the project, with the widest cavern being 29m wide.

**2** ventilation outlet buildings

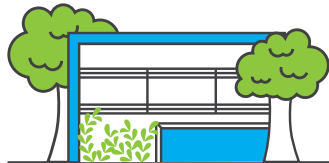


**4** cut and cover structures

forming the tunnel portals

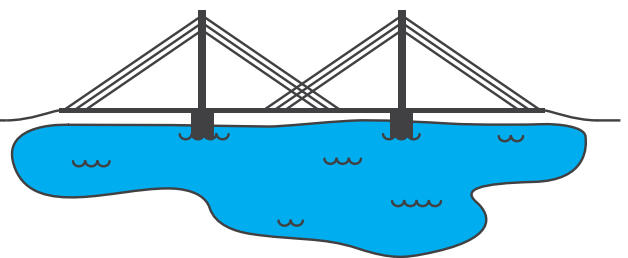


**22.4km** of tunnels



**12** total bridges over land and water

**3** motorway operations complexes



**Over \$100 million** spent on Utilities installations and relocations



**8,500**

luminaires

**9** substations



## Where are we in Q3 2021?

17km of tunnel excavation is complete

Over 5 million tonnes of spoil removed

142,000 rockbolts have been used to date

Tunneling is currently at 68% complete since commencing in December 2019

**35** major traffic switches over the course of the project while maintaining one of Sydney's busiest thoroughfares

Find out more about what we are currently working on by scanning the QR code



# Creating Jobs

The Rozelle Interchange Project has continued to operate through the devastating effects of the bushfires in Summer 2019-2020, and continued on through the COVID-19 pandemic securing the jobs of staff, workforce, subcontractors and suppliers.

In 2020, an average of over 2500 people worked nearly 4 million hours on the project.

We are currently recruiting for Mechanical and Electrical works with approximately 50 or more roles to recruit by the end of 2022.

The Project will create **over 15,000 jobs** by the time the motorway is opened to the public



With **over 10 million work hours** over a four year period



**94** trainees inducted to the project to date

**90** apprentices inducted to the project to date

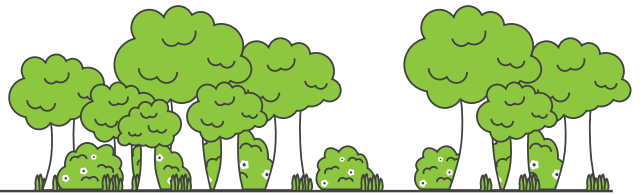
over **1,447** people directly employed to the project

**9,897** people indirectly employed by the project

over **37,848** hours of accredited training delivered

over **11,335** people inducted to the project by early 2021

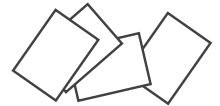
# Sustainability



Saved

**567,000**

sheets of paper per year by transitioning to digital construction platform



**308,000m<sup>2</sup>** of road pavement

**100%** battery powered shotcrete rig



Successful trial of low carbon concrete containing a high percentage of waste materials including recycled plastic fibres and recycled glass sand within temporary structural and non-structural works and permanent shared user paths.

An **Australian-first opportunity** for the combined used of recycled materials in a no cement type of concrete being used in permanent non-structural Project areas.

Glove recycling program instituted on the project which will divert thousands of gloves used as protective personal equipment from landfill.

Implementation of bespoke Smart-Spoil Tracking System to track spoil removal more and remove 7.8 million tonnes of spoil, reducing erroneous disposal of material while increasing tracking and reporting transparency.

**1,293m<sup>3</sup>** of bespoke low carbon concrete poured to date



**570 kilograms** of plastic fibre used in lieu of steel mesh



**\$39 million**

spent to date of the \$34 million budget directed towards Aboriginal Participation in Construction

**140 tonnes** of glass sand



**769,230 bottles** diverted from landfill and used in project pavements

## Our Values



Our project values are what shapes the culture and supports the vision of the Rozelle Interchange. We are building the team to deliver a complicated project and it is not only what we deliver, but also how we deliver it that is important.

**Care:** We will care for the health and safety of our people, our community and for the environment.

**Innovate:** We will communicate and collaborate to create future-focused solutions.

**Deliver:** We will do what we say we will do and expect the same of each other.



Rozelle Interchange Tunnels overview

**Rozelle Interchange<sup>^</sup>**

Opening 2023

**Western Harbour Tunnel & Beaches Link\***

**M4-M5 Link**

Eight lanes  
Opening 2023

Find out more about the tunnels on the project by scanning the QR code



Find out about the Rozelle Rail Yards Parklands by scanning the QR code

